

### Nidd Art Trail

- ◆ An annual arts and crafts event in Nidderdale
- ◆ Community groups, art clubs, craft groups, individuals, businesses and cafes
- ◆ Art and craft works by amateur & professional artists and craftspeople
- ◆ In churches, church halls, studios, galleries and cafes
- ◆ During 11 days of August up to the bank holiday
- ◆ No charges are made to participants or visitors.
- ◆ Venues are funded by artists, community associations, clubs and galleries.
- ◆ Central costs are met by donations.

The venues and artists were listed in a printed brochure, including a trail map and a new calendar feature. These were available as PDF documents. There is also a website with images at [www.niddart.org.uk](http://www.niddart.org.uk)

### New exhibitors in 2019

#### ◆ Gill Kirk “My Nidderdale” exhibition at No. 6 King Street Workshop

A personal view of places, flora and fauna that resonate in the Dale, using print techniques: etching, screen printing, collograph & mixed media, including favourite haunts such as Yorke’s Folly, Scar House Reservoir and Fishponds Wood.

Gill has combined her knowledge of wild flowers and pollinators gained from her studies and work in Nidderdale with her experiences in print techniques to produce a variety of prints and one off pieces.



#### ◆ Claire Baxter Fine Art Gallery.

Claire Baxter opened her gallery in Pateley Bridge High Street in 2019, selling her original oil paintings, limited edition prints and greeting cards as well as paintings by Danny Abrahams, Jonathan Shaw, Gemma Hayward and Jill Wray. She also stocks glassware by Sanders & Wallace and Silver Moon Glass, and ceramics by Fiona Mazza and Twisted Earth.

#### ◆ Neil Simone

Neil opened his new gallery in the impressive Old Chapel in Glasshouses, showing his oil paintings and prints that play with boundaries between natural and man-made structures. Lindsay Frazer showed her handmade dichroic glass fusion jewellery and other glass pieces.



#### ◆ Sherry Doyal. Tanacetum, Knareborough

Sherry joined the NiddArt Trail and the local Feva Festival. She showed drawings, prints and basketware and objects made from natural materials.

◆ **Just Makers** in Ripley Castle Courtyard: The shop has a wide range of paintings, cards, crafts, glass, ceramics, jewellery and textiles and runs craft workshops.

Just Makers made its workshop available to three local amateur artists, Karan McGrath, Janet Willoner and Jane Dodds, who showed their paintings in the upstairs workshop during the bank holiday weekend.



## Community Groups - Regular exhibitors

♦ **Lofthouse art group** opened each day in their new Bandroom Gallery and also in Lofthouse village hall. As well as a range of paintings, their locally made crafts, such as Nidderdale embroidered cushions and scarves, were for sale.



♦ **Middlesmoor group** At the top of Nidderdale put on an excellent display of irresistible tactile crafts. Children's toys made from wool, turned wooden pieces and practical items from recycled materials. And of course, irresistible tea and cakes.



### ♦ **Glasshouses Art Group**

The group displayed their paintings this year in Providence Chapel at Dacre Top, showing watercolours, acrylics and ink that they paint in their weekly sessions in Broadbelt Hall.



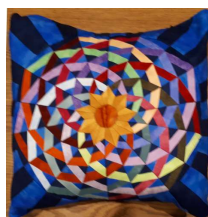
### ♦ **Pateley Bridge Art Club**

The club displayed 108 framed artworks from 25 members in St. Cuthbert's school, Patley Bridge. There were also prints and cards and cake and drinks. Photographs of all the exhibition artworks are on the club website.



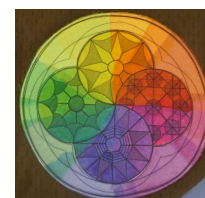
### ♦ **Glasshouses, Broadbelt Hall**

**Minerva's Owl group and others** created a varied display of work in textiles, felt, glass, porcelain, watercolour paintings and photographs. Finbar's Glass and Audrey Culling joined them. There was also a Fairtrade stall.



♦ **Dacre Banks Exhibition** at the *Royal Oak* hosted work by local artists and craftspeople in textiles, paintings, wood craft and china decoration. Margaret Chalmers introduced a range of contemporary felting.

♦ **Embroiderers' Guild** The local branch displayed a wide range of colourful embroidery in Pateley Bridge Methodist Church.



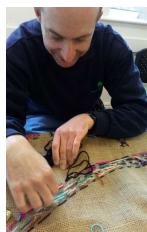
♦ **Bewerley Grange Chapel** Supporters of this restored 1494 chapel produced flower and plant displays on a theme of the environment and sustainability. Tea and coffee was served in the fine gardens.

♦ **Blubberhouses Church** St. Andrews restored church in the Washburn Valley opened for seven artists from around the local Dales to display silk art, textiles, watercolour paintings, prints, wood craft & pyrography, etchings, Dales photographs, acrylic paintings and water aid cards. There was more space this year for two new painters, Dennis Ledgerwood and H Rayner.



## Community Groups - Regular exhibitors continued

♦ **Hampsthwaite, Hollins Hall group** displayed their latest work in the spacious entrance hall as well as their workshop in the grounds. This included paintings, scratchcard collage paintings, hand painted cards and digital art from a scanner



♦ **Horticap, Bluecoat Wood, Otley Road, Harrogate:** A charity providing adults with learning disabilities training in horticulture, allied crafts and rural skills. Colourful individual work by students using donated wool sewn on recycled hessian coffee bean sacks. Also, gardens, wildlife area, tea room and shop open every day.

## Artist open studios

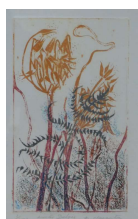
♦ **Richard and Jean Turner.** Intrepid travellers who followed the helpful signs along single track roads up to the top of Dallowgill Moor were rewarded with a warm welcome at their farm with a view and a display of their fine traditional paintings.



♦ **Lynn & Sam Cook** Some paintings, prints and Lynn's extensive travel sketchbooks were on display in Beverley. The sketchbooks can be seen in a larger exhibition in 2020.

♦ **Teresa Boast** in Beverley showed her extensive range of animal paintings and landscapes together with a range of coasters and cushions.

She also displayed paintings in Howe Stean Gorge Cafe, Lofthouse.



♦ **Margaret Clapperton** showed her original landscapes and portraits as well as prints, ink and pencil drawings in her open studio in her converted mill in Smelthouses.

## Craft workshops

Pateley Bridge, King Street Workshops, Moxon & Simms - Contemporary jewellery and prints

Fiona Mazza - Ceramicist

Joseph Hayton - Stone carver and sculptor

Fellbeck, Brimham Moor Road  
Ramsgill Village

Alice Clarke - Jewellery collections in her gallery & working studio.

Bill Spencer - Walking sticks for all occasions.

## Cafes hosting artworks

Lofthouse. Nidderdale Way Cafe

Pateley Bridge, High Street

Greenhow Hill, Toft Gate Barn Cafe

Brian Firth. Photographs

SweetheART - Tearoom and gallery – Gill Kirk paintings

Paintings by Dayna Cowper

## Galleries

Pateley Bridge, High Street

Ramsgill, Gallery and Studio

Ripley, Main Street,

Knaresborough, Green Dragon Yard

Artful Arts - Paintings, prints, glass gallery, framing.

Sarah Garforth - oil paintings, prints, mosaics and crafts.

Chantry House Gallery - paintings, prints, sculptures.

Art in the Mill - Paintings, prints, crafts, framing.

### Artists and Craftspeople

Artists and craftspeople that exhibited during the trail, individually or in groups, was some 129, mostly from the local Dales. The eight commercial galleries and shops also displayed the work of local artists not counted in these figures.

### Publicity

Brochures were distributed to libraries, tourist information, holiday sites, shops and pubs in the area and in local towns, Knaresborough, Pateley Bridge, Ripon, Harrogate, Otley, Ilkley, Grassington and Skipton.

Banners were placed in more locations and direction signs provided to venue organisers.

The NiddArt Trail was listed in the local and village magazines, Source, Link, "Focus in Darley", Birstwith village.

The Yorkshire Post and Nidderdale Herald, and syndicated local papers, included event details and photographs of artists prior to, and during the Art Trail in their events and entertainment sections.

Radio York broadcast a live interview on the first Friday and BBC TV: Look North visited Hollins Hall in Hampsthwaite to show the work of James Owen Thomas and Margaret Hockney at the final weekend.

The NiddArt Trail website has a list of locations and artists, with photographs. The brochure, trail map and venue planner are currently available to view and download. The news page was updated daily with photographs from around the venues, covering 28 of the 37 locations and were shared on Facebook. These are currently available at [niddart.org.uk](http://niddart.org.uk)

### Visitors

The community based activities attract a mixture of local people, visitors from local towns and cities and holidaymakers. Some are attracted by brochures and publicity, some pick them up from shops etc.

Not all venues can measure visitors, but those that did recorded very poor attendance during the bank holiday weekend. The very hot weather appeared to divert visitors to other activities.

### Developments

In 2019 we lost Lynn Cook who had been an inspirational driving force. It has been difficult to cover all the tasks. We need to attract volunteers to help with brochure design, distribution, website photo blogs and uploads to social media. We have already had a valuable offer.

A few artists and venues dropped out and a few came in. We hope to find new ones in the art community, especially in new villages or areas. We rely on donations to pay for brochures and signage, the venues need to be self funding.

We have had a some enquiries already. If you have proposals or leads for next year, please contact us by email. We will be meeting in January to discuss proposals.

### Acknowledgements

The organisers thank all the artists, community groups, community halls, churches, workshops, galleries, cafes and shops for their participation, newspapers for publicity and Knaresborough Lions, Pateley Bridge Town Council, Mayor's Fund for funding to pay for brochures and other donations for banners.

### NiddArt Trail organisers in 2019

Ann Kent - Chair & publicity

Penny Riley-Smith - Secretary

Charles Mellor - Finance and photography

Many venue organisers

Report by Nidderdale Art Trail  
25th November 2019

Email: [niddarttrail@gmail.com](mailto:niddarttrail@gmail.com)  
Website: [www.niddart.org.uk](http://www.niddart.org.uk)